

Material Guide

TEXTILES

normann
COPENHAGEN



We have carefully curated our selection of textiles from some of the best suppliers on the market who operate to the highest environmental standards.

CAMIRA

Oceanic
Aquarius
Synergy
Main Line Flax
Yoredale

KVADRAT

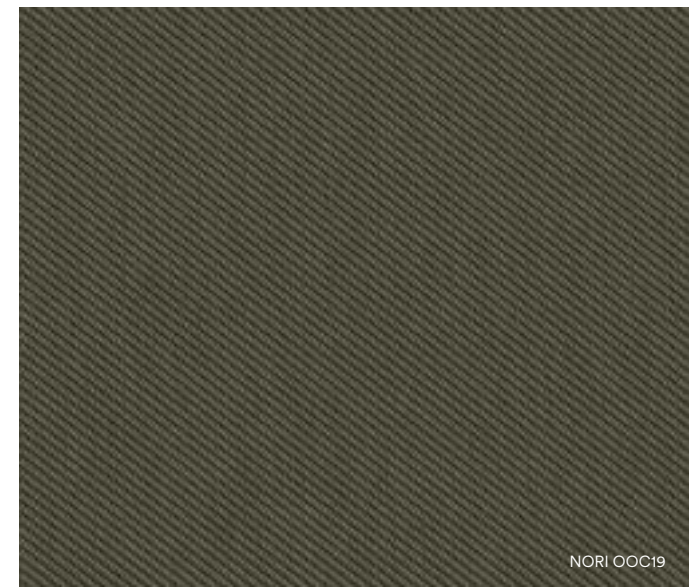
Technicolour
Remix
Canvas
Re-Wool
Steelcut Trio
Divina Melange
Fiord
Hallingdal
Zero
Vidar
Moss
Serpentine
Baru
Elle

JAB

City Velvet

OCEANIC

A strikingly contemporary fabric with an intricate twill weave. Oceanic is made entirely from recycled plastic removed from the sea and shores.



NORI OOC19

Manufacturer	Camira
Price Group	1
Composition	100% post-consumer recycled polyester, including 50% SEAQUAL yarn
Environment	Certified to OEKO-TEX® Standard 100 Certified to Indoor Advantage™ Gold Made from 100% post-consumer recycled polyester Nonmetallic dyestuffs
Abrasion resistance	Heavy duty / 10 year guarantee Independently certified to ≥100.000 Martindale cycles
Weight	497g/m2 ±5% (696g/lin.m ±5%)
Fastness to rubbing	Wet: 4, Dry: 4 (ISO 105 - X12)
Lightfastness	5 (ISO 105 - B02) OOC16: 4/5 (ISO 105 - B02)
Flammability	EN 1021 - 1 (cigarette) EN 1021 - 2 (match) BS 7176 Low Hazard Note: Flammability performance is dependent on components used. Our certificates show what substrates have been used in our tests. For composite tests customers must ensure their complete furniture meets the necessary standards.

Textiles Oceanic



FLOTSAM OOC01



JETSAM OOC02



COAST OOC03



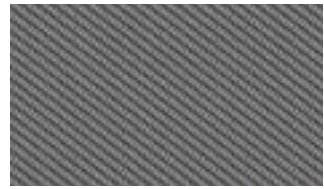
SEA OOC04



CORAL OOC05



ATOLL OOC06



BAY OOC08



NEPTUNE OOC11



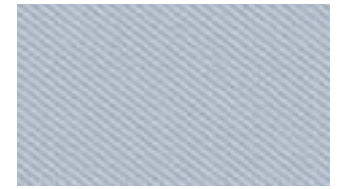
AQUATIC OOC12



PADDLE OOC13



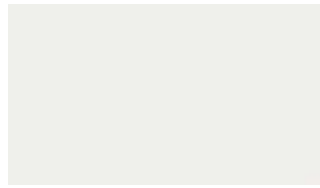
RIPTIDE OOC14



GULF OOC15



SEAFARER OOC16



CREST OOC17



CLAM OOC18



NORI OOC19



GANNET OOC20



SEASPRAY OOC21



COVE OOC22



SCALLOP OOC23



ROCKWEED OOC24



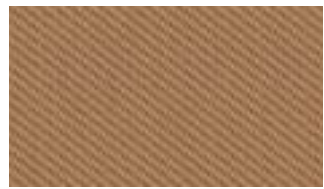
BUOY OOC25



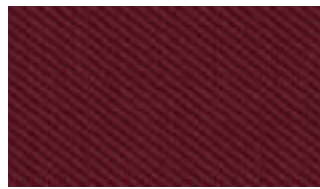
TIDAL OOC26



STARFISH OOC27



SANDY OOC28



ROSITA OOC29



DUNE OOC30

AQUARIUS

A versatile crêpe weave fabric that is suitable for task chairs and lounge seating. Made from 100% natural wool, which is not only rapidly renewable but also fully biodegradable.



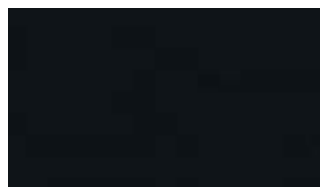
CHERRY JA419

Manufacturer	Camira
Price Group	1
Composition	100% virgin wool
Environment	Certified to Indoor Advantage™ "Gold" Rapidly renewable and compostable Nonmetallic dyestuffs
Abrasion resistance	Heavy duty / 10 year guarantee. Independently certified to ≥50.000 Martindale cycles
Weight	370 g/m2 ±5%
Fastness to rubbing	Wet: 4, Dry: 4 (ISO 105 - X12)
Lightfastness	5 (ISO 105 - B02)
Flammability	EN 1021-1&2 Cigarette & Match BS 7176 Low Hazard UNI 9175 Classe 1 IM BS 5852 Ignition Source 5 when FR treated BS 7176 Medium Hazard when FR treated BS 5867-2 Type B Curtains & Drapes when FR treated

Textiles Aquarius



HERON JA001



PITCH JA002



MARINER JA016



RHINO JA022



PORCELAIN JA024



JEZEBEL JA027



PADERBORN JA047



BISCAY JA059



VERMILLION JA062



AMBER JA068



SWART JA069



POISON JA084



MUSHROOM JA125



PURPLE JA157



SMURF JA159



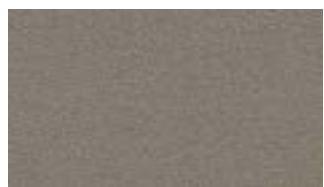
TAMBOURINE JA183



MANTA JA194



COURGETTE JA201



CERES JA409



ARISTOTLE JA416



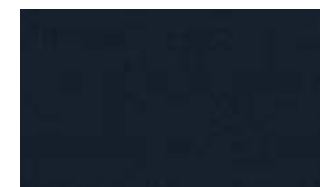
CHERRY JA419



ZIPPY JA426



CIRCUS JA428



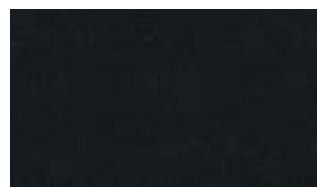
VICO JA435



TOMBOLA JA442



CHOMSKY JA443



SPINOZA JA448

SYNERGY

A soft handle wool blend fabric featuring exquisite fiber dyed shades and sumptuous piece dyed solids.



INTERTWINE, LDS42

Manufacturer	Camira
Price Group	2
Composition	95% virgin wool, 5% polyamide
Environment	Certified to the EU Ecolabel Certified to Indoor Advantage™ "Gold"
Abrasion resistance	Heavy duty / 10 year guarantee Independently certified to ≥ 100.000 Martindale cycles
Weight	400 g/m ² $\pm 5\%$
Fastness to rubbing	Wet: 3, Dry: 4 (ISO 105 - X12)
Lightfastness	5 (ISO 105 - B02)
Flammability	EN 1021 - 1&2 Cigarette & Match BS 7176 Low Hazard NF D 60-013 ÖNORM B 3825 & A 3800-1 (58 kg/m ³ CMHR Foam) UNI 9175 Classe 1 IM EN 13501-1 Adhered Class D, s1, d0 EN 13501-1 Un-adhered Class E, s2, d0 BS 5852 Ignition Source 5 when FR treated BS 7176 Medium Hazard when FR treated EN 13501-1 Adhered Class B, s1, d0 when FR treated EN 13501-1 Un-adhered Class D, s2, d0 when FR treated BS 5867-2: Type B Curtains & Drapes when FR treated

Textiles Synergy



VENTURE LDS05



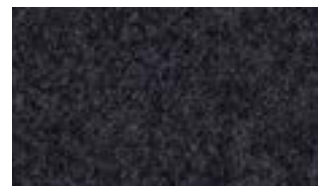
FATE LDS07



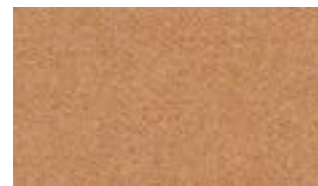
SERENDIPITY LDS08



PARTNER LDS16



MIX LDS17



LOOP LDS18



CHAIN LDS19



LEVEL LDS20



TEAM LDS21



FRAME LDS22



BRACKET LDS23



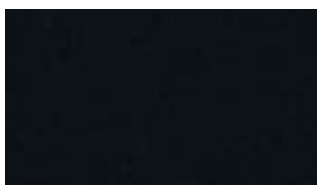
BOND LDS24



COMPOUND LDS25



BRIDGE LDS26



SEEK LDS27



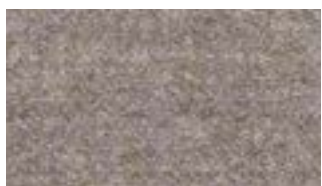
LATERAL LDS28



HOOK LDS29



PAIR LDS31



AFFIX LDS32



TAG LDS33



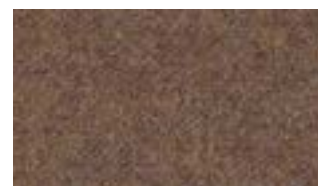
WED LDS34



CHEMISTRY LDS35



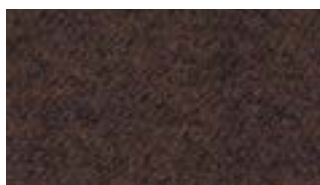
MEDLEY LDS36



LINEA LDS37



UNITY LDS38



COLLECTIVE LDS39



CO-OPERATE LDS40



COUPLE LDS41



INTERTWINE LDS42



MARRY LDS43

Textiles Synergy



RELATE LDS44



SUMMON LDS45



GATHER LDS46



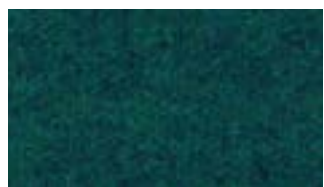
INTEGRATE LDS47



INTERFUSE LDS48



APPEND LDS49



LEAGUE LDS50



KINDNESS LDS51



COMPLY LDS52



PACT LDS53



REGARD LDS54



SUPPORT LDS55



KINSHIP LDS56



ENGAGE LDS57



FAMILY LDS58



GROUP LDS59



ACCORD LDS60



ASSEMBLE LDS61



ALIKE LDS62



GUILD LDS63



ORDER LDS64



HUDDLE LDS65



FELLOWSHIP LDS66



WARMTH LDS67



COLLABORATE LDS68



SYNC LDS69



TOGETHER LDS70



OPEN LDS71

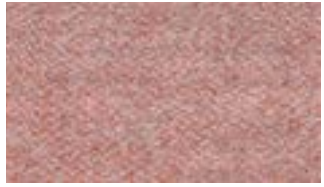


COMPOSE LDS72



WORK LDS73

Textiles Synergy



AFFINITY LDS74



CONTRIBUTION LDS75



SUCCESS LDS76



COMBO LDS77



CORDIAL LDS78



AMIABLE LDS79



APT LDS80



SIMILAR LDS81



LIKENESS LDS82



CONGREGATE LDS83



MUTUAL LDS84



SHARE LDS85



GLOBAL LDS86



VALUES LDS87



PROCESS LDS88



MAIN LINE FLAX

An inherently flame retardant fabric made from sustainable sources and woven into interesting solids and cross-colors inspired by the rich tones of rare jewels.

UPMINSTER, MLF20



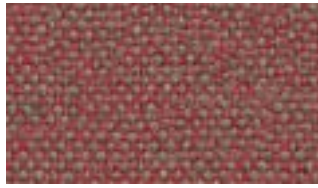
HOLBORN, MLF05

Manufacturer	Camira
Price Group	2
Composition	70% virgin wool, 30% flax
Environment	Certified to the EU Ecolabel Certified to Indoor Advantage™ "Gold" Rapidly renewable and compostable Made from wool and bast fiber
Martindale	Heavy duty / 10 year guarantee Independently certified to ≥50.000 Martindale cycles
Weight	437 g/m2 ±5%
Fastness to rubbing	Wet: 3, Dry: 4 (ISO 105 - X12)
Lightfastness	5 (ISO 105 - B02)
Flammability	EN 1021-1&2 Cigarette & Match BS 7176 Low Hazard BS 5852 Ignition Source 5 BS 7176 Medium Hazard NF D 60-013 ÖNORM B 3825 & A 3800-1 (58kg/m3 CMHR Foam) UNI 9175 Classe 1 IM BS 5867-2: Type B Curtains & Drapes

Textiles Main Line Flax



ALDGATE MLF01



ARCHWAY MLF02



BARBICAN MLF03



HOLBORN MLF05



KILBURN MLF06



KENSINGTON MLF07



LAMBETH MLF08



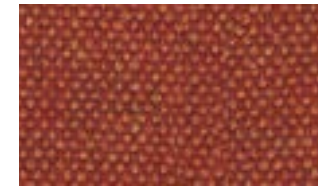
MONUMENT MLF09



NEWBURY MLF10



MORDEN MLF12



LEYTON MLF13



PARSONS MLF14



STOCKWELL MLF15



TEMPLE MLF16



TOOTING MLF17



TUFNELL MLF18



VICTORIA MLF19



UPMINSTER MLF20



WATERLOO MLF21



WESTMINSTER MLF22



BANK MLF23



BAYSWATER MLF24



BETHNAL MLF25



CAMDEN MLF26



EDGWARE MLF28



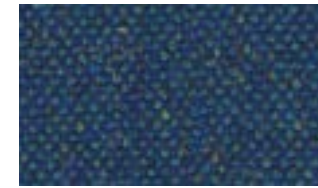
FARRINGDON MLF29



GOLDHAWK MLF31



GREENFORD MLF32



PIMLICO MLF34



BROMPTON MLF35

Textiles Main Line Flax



TOWER MLF36



STANMORE MLF37



NORTHFIELDS MLF40



ALPERTON MLF43



BALHAM MLF44



BARKING MLF45



BLACKWALL MLF46



BRIXTON MLF47



CHIGWELL MLF48



CLAPHAM MLF49



EMBANKMENT MLF50



EPPING MLF51



GREENWICH MLF52



HAMPSTEAD MLF53



HARROW MLF54



HORNCHURCH MLF55



KENTISH MLF56



MOORGATE MLF57



PERIVALE MLF59



PINNER MLF60



REDBRIDGE MLF61



RICHMOND MLF62



SHADWELL MLF63



STRATFORD MLF64



WATFORD MLF65



WHITECHAPEL MLF66



WOODFORD MLF67

YOREDALE

A highly textured textile with undulations reflective of its Yorkshire roots, its fascinating bouclé style yarn features a contrasting black binder that brings depth to its saturated tones.



GRASSINGTON, UDA27

Manufacturer	Camira
Price Group	3
Composition	95% wool, 3% polyester, 2% polyamide
Environment	Certified to Indoor Advantage™ "Gold" Nonmetallic dyestuffs
Abrasion resistance	Heavy duty / 10 year guarantee. Independently certified to ≥50.000 Martindale cycles
Weight	700 g/m2 ±5%
Fastness to rubbing	Wet: 4, Dry: 4 (ISO 105 - X12)
Lightfastness	5 (ISO 105 - B02)
Flammability	EN 1021 - 1&2 Cigarette & Match BS 7176 Low Hazard ÖNORM B 3825 & A 3800-1 (58kg/m3 CMHR Foam) UNI 9175 Classe 1 IM BS 5852 Ignition Source 5 when FR treated BS 7176 Medium Hazard when FR treated

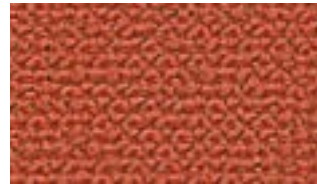
Textiles Yoredale



BUCKDEN UDA01



KIDSTONE UDA02



ASKRIGG UDA03



HARDRAW UDA04



SIMONSTONE UDA05



THORALBY UDA06



CARPERBY UDA07



GAYLE UDA08



THORNTON UDA09



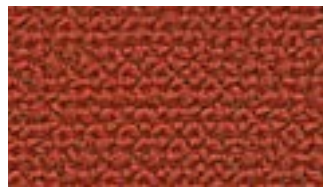
CRAY UDA10



FOSSDALE UDA11



WOODALE UDA12



WALDEN UDA13



SEDBUSK UDA14



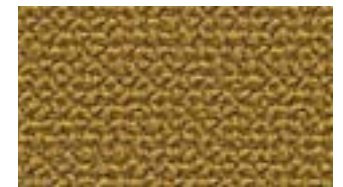
LITTON UDA15



NIDD UDA16



RIBBLE UDA17



WHARFE UDA18



RIPLEY UDA19



DARLEY UDA20



DACRE UDA21



BURNSALL UDA22



CRACOE UDA23



WODEN UDA24



LEYBURN UDA25



GRASSINGTON UDA27



BRONTE UDA28



GORDALE UDA29



HORTON UDA30



ILKLEY UDA31

Textiles Yoredale



INGLETON

UDA32



KETTLEWELL

UDA33



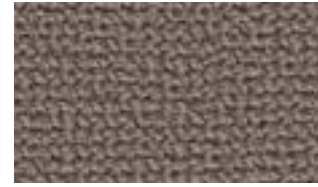
MALHAM

UDA34



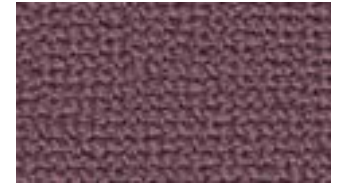
MARSDEN

UDA35



SETTLE

UDA36



SKIPTON

UDA37



SWALEDALE

UDA38

TECHNICOLOUR

Technicolour is a tactile melange upholstery by Peter Saville crafted using a specially developed colour system.

The simple yet sophisticated colour system is inspired by how colours are adjusted digitally. It brings together the five bold hues of livestock marking spray colours – orange, blue, green, yellow and magenta – with five neutrals: black, brown, a light and dark beige, and undyed wool. To create Technicolour woollen tops are initially dyed and combined in precise colour percentages before being spun into yarns.



Category	Kvadrat upholstery
Price Group	1
Pattern	Solid
Composition	100% new English wool, worsted
Width	Approx. 140 cm (Approx. 55")
Weight	430 g/lin. m (13.87 oz/ ly)
Repeat	Approx. 0/0 cm (Approx. 0"/0")
Durability	80,000 Martindale
Pilling	4 (ISO 1-5)
Lightfastness	7 (ISO 1-8)
Fire Tests	AS/NZS 3837 class 2 • BS 5867 part 2 type B with treatment • SN 198 898 5.3 with treatment • ASTM E84 Class A Unadhered • BS 5852 crib 5 with treatment • UNI 9175 1IM • IMO FTP Code 2010 Part 8 • ASTM E84 Class A Adhered • BS 5852 part 1 • BS 7176 Low Hazard • EN 1021-1/2 • NF D 60 013 • US Cal. Bull. 117-2013
Fastness to rubbing	4-5 (Dry) 4-5 (Wet)
Airflow	301 Pa s/m
Seam Slippage	10 mm (warp), 8.1 mm (weft)

Textiles Technicolour



TECHNICOLOUR 0110



TECHNICOLOUR 0120



TECHNICOLOUR 0140



TECHNICOLOUR 0150



TECHNICOLOUR 0160



TECHNICOLOUR 0190



TECHNICOLOUR 0200



TECHNICOLOUR 0210



TECHNICOLOUR 0220



TECHNICOLOUR 0230



TECHNICOLOUR 0250



TECHNICOLOUR 0260



TECHNICOLOUR 0340



TECHNICOLOUR 0360



TECHNICOLOUR 0370



TECHNICOLOUR 0520



TECHNICOLOUR 0550



TECHNICOLOUR 0620



TECHNICOLOUR 0650



TECHNICOLOUR 0690



TECHNICOLOUR 0810



TECHNICOLOUR 0820



TECHNICOLOUR 0830



TECHNICOLOUR 0860



TECHNICOLOUR 0870



TECHNICOLOUR 0890



TECHNICOLOUR 0930



TECHNICOLOUR 0940



TECHNICOLOUR 0970



TECHNICOLOUR 0990

REMIX

Remix 3 is an elegant upholstery textile distinguished by exceptional depth of colour, designed by Giulio Ridolfo.

Remix 3 looks unicoloured from a distance but reveals subtle details and colour contrasts when viewed close-up. The textile features a tight, minimalistic weave, and derives its lively colour play from a combination of two different mélange yarns, which each combine up to three hues.



REMIX 3, 0412

Category	Kvadrat upholstery
Price Group	2
Pattern	Solid
Composition	90% new wool worsted, 10% nylon
Width	Approx. 140 cm (Approx. 55")
Weight	420 g/lin. m (13.55 oz/ly)
Repeat	Approx. 0/0 cm (Approx. 0"/0")
Durability	100,000 Martindale
Pilling	4 (ISO 1-5)
Lightfastness	6
Fire Tests	AS/NZS 1530.3 • BS 5852 crib 5 with treatment • BS 5852 part 1 • IMO FTP Code 2010 Part 7 with treatment • IMO FTP Code 2010 Part 8 • NF D 60 013 • NFPA 260 • SN 198 898 5.3 with treatment • UNI 9175 1IM • US Cal. Bull. 117-2013 • EN 1021-1/2 • AS/NZS 3837 class 2 • ÖNORM B1/Q1 • ASTM E84 Class A Unadhered • ASTM E84 Class A Adhered • GB 50222 B1 with treatment (Chinese)
Fastness to rubbing	4 (Dry) 4 (Wet)
Airflow	465 Pa s/m
Absorption	0.55/Class D (Absorption flat) 0.80/Class B (Absorption folded))
Seam Slippage	5 mm (warp), 3 mm (weft)

Textiles Remix



REMIX 0113



REMIX 0123



REMIX 0126



REMIX 0133



REMIX 0136



REMIX 0143



REMIX 0152



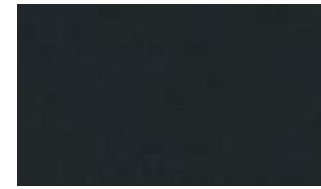
REMIX 0163



REMIX 0173



REMIX 0183



REMIX 0196



REMIX 0223



REMIX 0233



REMIX 0242



REMIX 0252



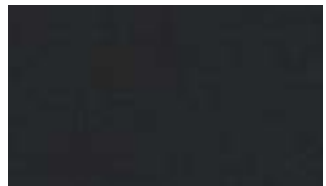
REMIX 0266



REMIX 0276



REMIX 0286



REMIX 0296



REMIX 0326



REMIX 0346



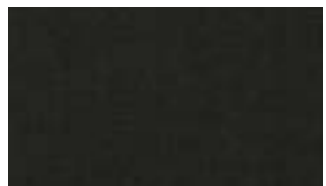
REMIX 0356



REMIX 0362



REMIX 0373



REMIX 0383



REMIX 0393



REMIX 0406



REMIX 0412



REMIX 0422



REMIX 0433

Textiles Remix



REMIX 0443



REMIX 0452



REMIX 0516



REMIX 0536



REMIX 0543



REMIX 0566



REMIX 0606



REMIX 0612



REMIX 0632



REMIX 0643



REMIX 0653



REMIX 0662



REMIX 0672



REMIX 0682



REMIX 0686



REMIX 0692



REMIX 0716



REMIX 0722



REMIX 0733



REMIX 0743



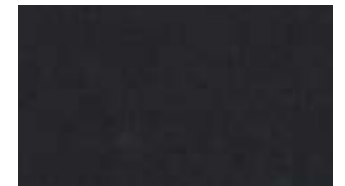
REMIX 0753



REMIX 0762



REMIX 0773



REMIX 0783



REMIX 0796



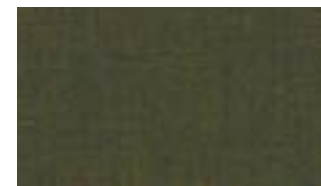
REMIX 0816



REMIX 0823



REMIX 0836



REMIX 0842



REMIX 0852

Textiles Remix



REMIX 0866



REMIX 0873



REMIX 0906



REMIX 0912



REMIX 0923



REMIX 0933



REMIX 0942



REMIX 0954



REMIX 0962



REMIX 0973



REMIX 0982



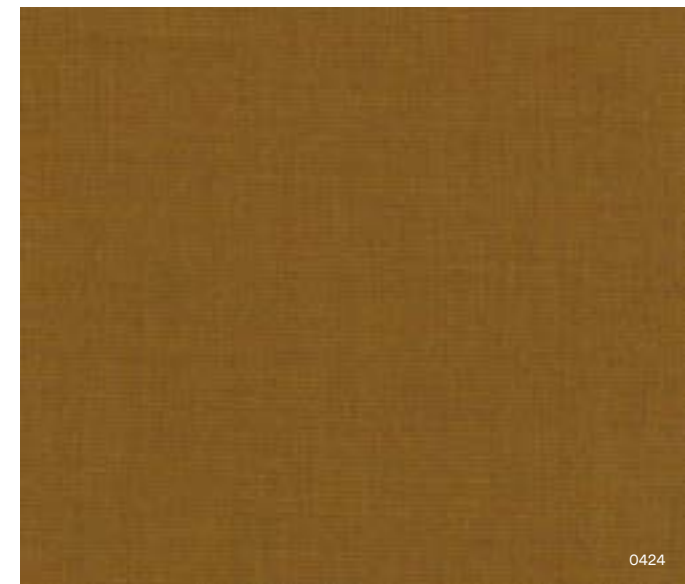
REMIX 0996





CANVAS

Canvas is a vibrant woollen upholstery textile created by Giulio Ridolfo.



0424

Category	Kvadrat upholstery
Price Group	3
Pattern	Solid
Composition	90% new wool worsted, 10% nylon
Width	Approx. 140 cm (Approx. 55")
Weight	480 g/lin. m (15.48 oz/ly)
Repeat	Approx. 0/0 cm (Approx. 0"/0")
Durability	100,000 Martindale
Pilling	4 (ISO 1-5)
Lightfastness	5-6
Fire Tests	AS/NZS 1530.3 • BS 5852 crib 5 with treatment • BS 5852 part 1 • IMO FTP Code 2010 Part 8 • NF D 60 013 • NFPA 260 • SN 198 898 5.3 with treatment • UNI 9175 1IM • US Cal. Bull. 117-2013 • EN 1021-1/2 • ÖNORM B1/Q1 • ASTM E84 Class A Adhered • ASTM E84 Class A Unadhered
Fastness to rubbing	4-5 (Dry) 4-5 (Wet)
Airflow	849 Pa s/m
Absorption	0.60/Class C (Absorption flat) 0.80/Class B (Absorption folded)
Seam Slippage	3.5 mm (warp), 2 mm (weft)

Textiles Canvas



CANVAS 0114



CANVAS 0124



CANVAS 0134



CANVAS 0154



CANVAS 0174



CANVAS 0216



CANVAS 0224



CANVAS 0244



CANVAS 0254



CANVAS 0264



CANVAS 0356



CANVAS 0364



CANVAS 0374



CANVAS 0414



CANVAS 0424



CANVAS 0446



CANVAS 0454



CANVAS 0546



CANVAS 0556



CANVAS 0566



CANVAS 0576



CANVAS 0614



CANVAS 0644



CANVAS 0654



CANVAS 0666



CANVAS 0674



CANVAS 0684



CANVAS 0694



CANVAS 0716



CANVAS 0726

Textiles Canvas



CANVAS 0734



CANVAS 0746



CANVAS 0754



CANVAS 0786



CANVAS 0794



CANVAS 0836



CANVAS 0854



CANVAS 0926



CANVAS 0936



CANVAS 0946



CANVAS 0954



CANVAS 0964



CANVAS 0974



CANVAS 0984



CANVAS 0996

RE-WOOL

Re-wool 2 is an upholstery textile designed by Margrethe Odgaard woven with 45% recycled wool.

The recycled woollen yarn used in the warp is spun from post-industrial fibre scraps collected from Kvadrat's own production of woollen textiles. Closing this loop within their own production ensures that the recycled wool is of the same high quality in every batch.

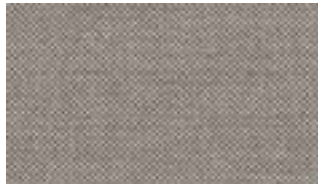


Category	Kvadrat upholstery
Price Group	3
Pattern	Solid
Composition	45% recycled wool 45% new wool, worsted 10% nylon
Width	Approx. 140 cm (Approx. 55")
Weight	540 g/lin. m (17.42 oz/ ly)
Repeat	Approx. 0/0 cm (Approx. 0"/0")
Durability	100,000 Martindale
Pilling	4 (ISO 1-5)
Lightfastness	6-7 (ISO 1-8)
Fire Tests	AS/NZS 3837 class 2 • SN 198 898 5.3 with treatment • ASTM E84 Class A Unadhered • BS 5852 crib 5 with treatment • AS/NZS 1530.3 • UNI 9175 1IM • IMO FTP Code 2010 Part 8 • ÖNORM B1/Q1 • BS 5852 part 1 • EN 1021-1/2 • NF D 60 013 • US Cal. Bull. 117-2013 • EN 13501 B-s2, d0 with treatment
Fastness to rubbing	4-5 (Dry) 4-5 (Wet)
Airflow	258 Pa s/m
Absorption	0.50/Class D (Absorption flat) 0.75/Class C (Absorption folded)
Seam Slippage	3.5 mm (warp), 5 mm (weft)

Textiles Re-Wool



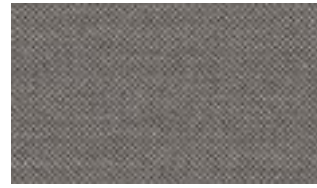
RE-WOOL 0108



RE-WOOL 0128



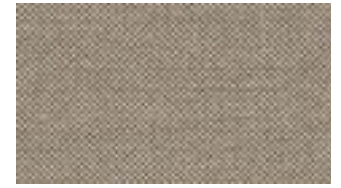
RE-WOOL 0147



RE-WOOL 0158



RE-WOOL 0198



RE-WOOL 0218



RE-WOOL 0347



RE-WOOL 0377



RE-WOOL 0397



RE-WOOL 0447



RE-WOOL 0558



RE-WOOL 0568



RE-WOOL 0577



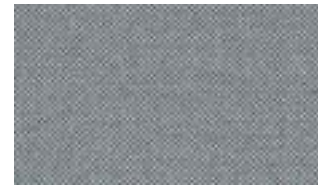
RE-WOOL 0648



RE-WOOL 0657



RE-WOOL 0687



RE-WOOL 0718



RE-WOOL 0767



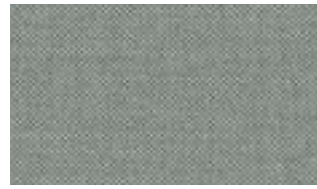
RE-WOOL 0787



RE-WOOL 0797



RE-WOOL 0858



RE-WOOL 0868



RE-WOOL 0967



RE-WOOL 0977



RE-WOOL 0987

STEELCUT TRIO

The three-dimensional surface of Steelcut Trio resembles small pyramids or steel points. Despite the complexity of the textile's innovative weave, it has a simple, precise expression. Steelcut Trio is yarn-dyed and made from 3 differently coloured yarns.



Category	Kvadrat upholstery
Price Group	4
Pattern	Solid
Composition	90% new wool worsted, 10% nylon
Width	Approx. 140 cm (Approx. 55")
Weight	770 g/lin. m (24.84 oz/ly)
Repeat	Approx. 0/0 cm (Approx. 0"/0")
Durability	100,000 Martindale
Pilling	4 (ISO 1-5)
Lightfastness	6-7
Fire Tests	AS/NZS 1530.3 • BS 5852 crib 5 with treatment • BS 5852 part 1 • IMO FTP Code 2010 Part 8 • NF D 60 013 • NFPA 260 • SN 198 898 5.3 with treatment • UNI 9175 11M • US Cal. Bull. 117-2013 • EN 1021-1/2 • ASTM E84 Class B Unadhered • ASTM E84 Class B Adhered • ÖNORM B1/Q1 • AS/NZS 3837 class 2 • GB 50222 B1 with treatment (Chinese)
Fastness to rubbing	4-5 (Dry) 4-5 (Wet)
Airflow	910 Pa s/m
Absorption	0.70/Class C (Absorption flat) 0.95/Class A (Absorption folded)
Seam Slippage	3.5 mm (warp), 2 mm (weft)

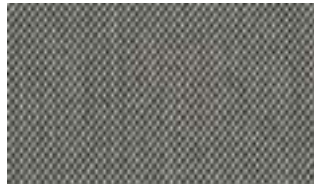
Textiles Steelcut Trio



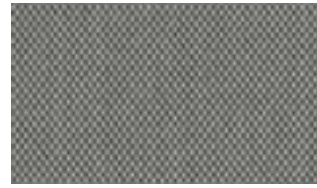
STEELCUT TRIO 0105



STEELCUT TRIO 0113



STEELCUT TRIO 0124



STEELCUT TRIO 0133



STEELCUT TRIO 0153



STEELCUT TRIO 0176



STEELCUT TRIO 0195



STEELCUT TRIO 0205



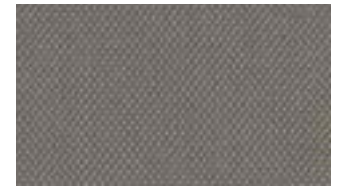
STEELCUT TRIO 0213



STEELCUT TRIO 0226



STEELCUT TRIO 0236



STEELCUT TRIO 0246



STEELCUT TRIO 0253



STEELCUT TRIO 0266



STEELCUT TRIO 0276



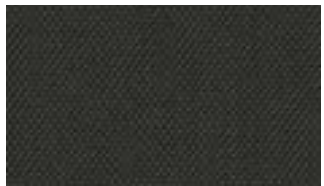
STEELCUT TRIO 0283



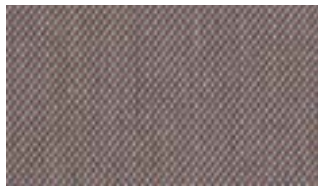
STEELCUT TRIO 0336



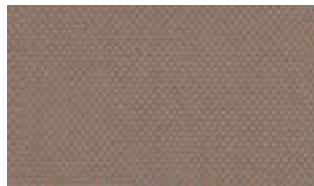
STEELCUT TRIO 0376



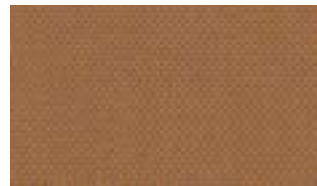
STEELCUT TRIO 0383



STEELCUT TRIO 0416



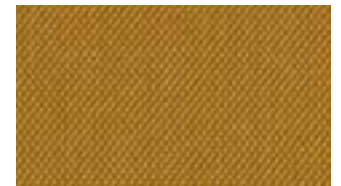
STEELCUT TRIO 0426



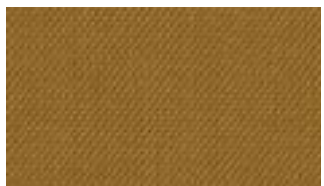
STEELCUT TRIO 0436



STEELCUT TRIO 0446



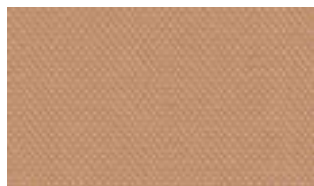
STEELCUT TRIO 0453



STEELCUT TRIO 0466



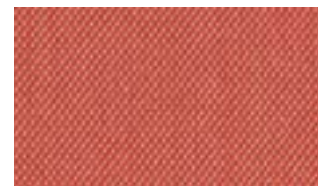
STEELCUT TRIO 0476



STEELCUT TRIO 0506



STEELCUT TRIO 0515



STEELCUT TRIO 0526



STEELCUT TRIO 0533

Textiles Steelcut Trio



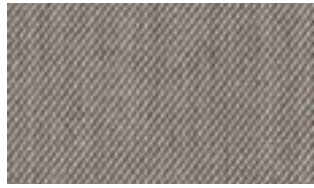
STEELCUT TRIO

0553



STEELCUT TRIO

0576



STEELCUT TRIO

0616



STEELCUT TRIO

0636



STEELCUT TRIO

0645



STEELCUT TRIO

0666



STEELCUT TRIO

0686



STEELCUT TRIO

0713



STEELCUT TRIO

0716



STEELCUT TRIO

0746



STEELCUT TRIO

0756



STEELCUT TRIO

0776



STEELCUT TRIO

0796



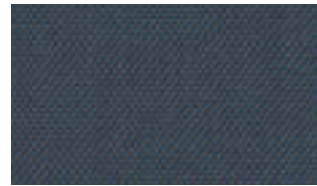
STEELCUT TRIO

0806



STEELCUT TRIO

0865



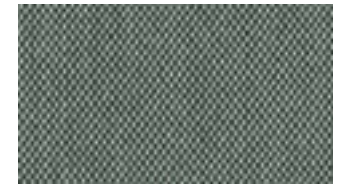
STEELCUT TRIO

0883



STEELCUT TRIO

0906



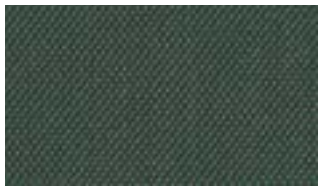
STEELCUT TRIO

0916



STEELCUT TRIO

0946



STEELCUT TRIO

0966



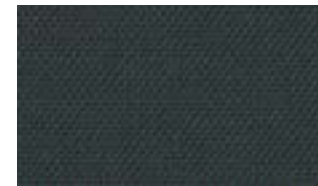
STEELCUT TRIO

0976



STEELCUT TRIO

0983



STEELCUT TRIO

0996

DIVINA MELANGE

Divina Melange 3 is a vibrant piece-dyed woollen upholstery textile reminiscent of felt. Cheerfully simple, it comes in a fresh, versatile palette by artist and designer Finn Sködt.



Category	Kvadrat upholstery
Price Group	5
Pattern	Solid
Composition	100% new wool
Width	Approx. 150 cm (Approx. 59")
Weight	840 g/lin. m (27.09 oz/ly)
Repeat	Approx. 0/0 cm (Approx. 0"/0")
Durability	45,000 Martindale
Pilling	3 (ISO 1-5)
Lightfastness	6-7
Fire Tests	AS/NZS 1530.3 • BS 5852 Crib 5 • BS 5852 part 1 • BS 5867 part 2 type B • IMO FTP Code 2010 Part 8 • NF D 60 013 • NFPA 260 • SN 198 898 5.3 with treatment • UNI 9175 1IM • US Cal. Bull. 117-2013 • EN 1021-1/2 • EN 13501, C-s1, d0, glued • Chinese GB 50222B1 with treatment • ÖNORM B1/Q1 • NFPA 701 with treatment • ASTM E84 Class B Unadhered • ASTM E84 Class A Adhered
Fastness to rubbing	5 (Dry) 3-4 (Wet)
Airflow	678 Pa s/m
Absorption	0.60/Class C (Absorption flat) 0.70/Class C (Absorption folded)
Seam Slippage	2 mm (warp), 2 mm (weft)

Textiles Divina Melange



DIVINA MELANGE 0120



DIVINA MELANGE 0147



DIVINA MELANGE 0170



DIVINA MELANGE 0180



DIVINA MELANGE 0227



DIVINA MELANGE 0237



DIVINA MELANGE 0260



DIVINA MELANGE 0277



DIVINA MELANGE 0280



DIVINA MELANGE 0367



DIVINA MELANGE 0427



DIVINA MELANGE 0457



DIVINA MELANGE 0467



DIVINA MELANGE 0471



DIVINA MELANGE 0517



DIVINA MELANGE 0527



DIVINA MELANGE 0547



DIVINA MELANGE 0557



DIVINA MELANGE 0567



DIVINA MELANGE 0571



DIVINA MELANGE 0581



DIVINA MELANGE 0597



DIVINA MELANGE 0617



DIVINA MELANGE 0620



DIVINA MELANGE 0647



DIVINA MELANGE 0677



DIVINA MELANGE 0687



DIVINA MELANGE 0731



DIVINA MELANGE 0747



DIVINA MELANGE 0757

Textiles Divina Melange



DIVINA MELANGE

0777



DIVINA MELANGE

0787



DIVINA MELANGE

0821



DIVINA MELANGE

0871



DIVINA MELANGE

0917



DIVINA MELANGE

0937



DIVINA MELANGE

0967



DIVINA MELANGE

0977



FIORD

The construction of Fiord combines a mélange yarn with a unicoloured yarn that creates pearl-like dots that play across the textile's surface. This sophisticated expression reflects a key source of inspiration behind the design: moonlight glittering like pearls on the rippling waters of a Norwegian fjord.



0262

Category	Kvadrat upholstery
Price Group	5
Pattern	Solid
Composition	92% new wool worsted, 8% nylon
Width	Approx. 140 cm (Approx. 55")
Weight	500 g/lin. m (16.13 oz/ly)
Repeat	Approx. 0/0 cm (Approx. 0"/0")
Durability	60,000 Martindale
Pilling	4-5 (ISO 1-5)
Lightfastness	6
Fire Tests	BS 5852 crib 5 with treatment • BS 5852 part 1 • IMO FTP Code 2010 Part 8 • NF D 60 013 • NFPA 260 • SN 198 898 5.3 with treatment • UNI 9175 1IM • US Cal. Bull. 117-2013 • EN 1021-1/2 • ASTM E84 Class A Adhered • ASTM E84 Class A Unadhered • AS/NZS 3837 class 2 • GB 50222 B1 with treatment (Chinese) • ÖNORM B1/Q1
Fastness to rubbing	4-5 (Dry) 4-5 (Wet)
Airflow	484 Pa s/m
Seam Slippage	4.5 mm (warp), 5 mm (weft)

Textiles Fiord



FIORD 0101



FIORD 0121



FIORD 0151



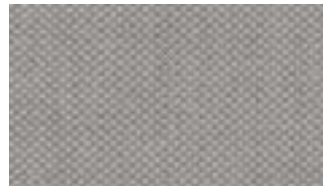
FIORD 0171



FIORD 0191



FIORD 0201



FIORD 0251



FIORD 0262



FIORD 0271



FIORD 0322



FIORD 0351



FIORD 0371



FIORD 0391



FIORD 0422



FIORD 0442



FIORD 0451



FIORD 0521



FIORD 0551



FIORD 0562



FIORD 0571



FIORD 0581



FIORD 0591



FIORD 0642



FIORD 0662



FIORD 0751



FIORD 0771



FIORD 0782



FIORD 0791



FIORD 0821



FIORD 0862

Textiles Fiord



FIORD

0951



FIORD

0961



FIORD

0971



FIORD

0981



FIORD

0991

HALLINGDAL

Kvadrat's first textile 'Hallingdal' has become the archetype of woollen textiles. The very durable upholstery fabric was originally designed in 1965 by Nanna Ditzel, and is now available in a version with an updated colour scale.

Hallingdal is made of wool and viscose, which complement each other well: the wool provides excellent durability and flexibility, whilst the viscose adds brilliance and depth to the colour. Both materials are dyed before they are spun, which highlights the rich texture of the fabric.



Category	Kvadrat upholstery
Price Group	5
Pattern	Solid
Composition	70% new wool, 30% viscose
Width	Approx. 130 cm (Approx. 51")
Weight	795 g/lin. m (25.64 oz/ly)
Repeat	Approx. 0/0 cm (Approx. 0"/0")
Durability	100,000 Martindale
Pilling	3-4 (ISO 1-5)
Lightfastness	7
Fire Tests	AS/NZS 1530.3 • BS 5852 Crib 5 • BS 5852 part 1 • IMO FTP Code 2010 Part 8 • NF D 60 013 • NFPA 260 • UNI 9175 1IM • US Cal. Bull. 117-2013 • EN 1021-1/2 • ASTM E84 Class A Adhered • SN 198 898 5.3 with treatment • ÖNORM B1/Q1 • GB 50222 B1 with treatment (Chinese) • AS/NZS 3837 class 2 • ASTM E84 Class B Unadhered
Fastness to rubbing	4-5 (Dry) 3-4 (Wet)
Airflow	182 Pa s/m
Absorption	0.45/Class D (Absorption flat) 0.70/Class C (Absorption folded)
Seam Slippage	4.5 mm (warp), 4 mm (weft)

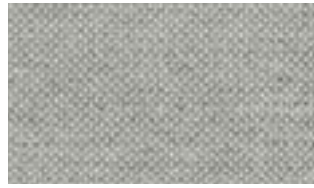
Textiles Hallingdal



HALLINGDAL 0100



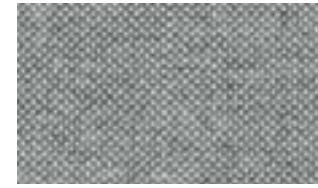
HALLINGDAL 0103



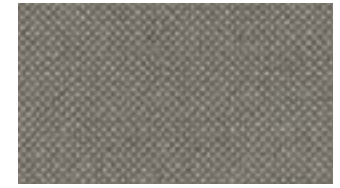
HALLINGDAL 0110



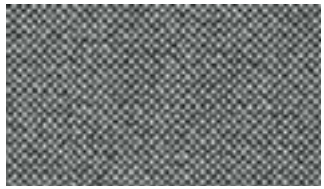
HALLINGDAL 0113



HALLINGDAL 0116



HALLINGDAL 0123



HALLINGDAL 0126



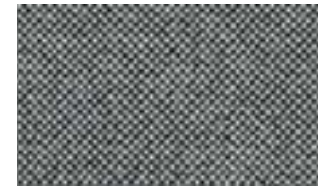
HALLINGDAL 0130



HALLINGDAL 0143



HALLINGDAL 0153



HALLINGDAL 0166



HALLINGDAL 0173



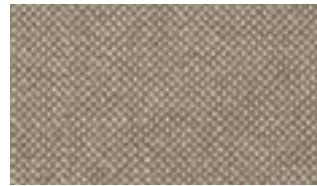
HALLINGDAL 0180



HALLINGDAL 0190



HALLINGDAL 0200



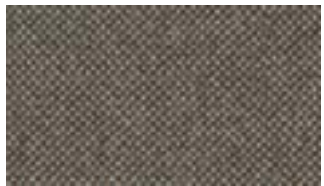
HALLINGDAL 0220



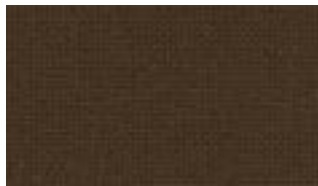
HALLINGDAL 0224



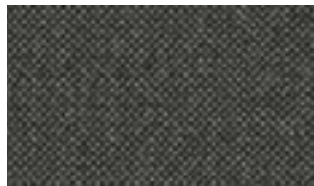
HALLINGDAL 0227



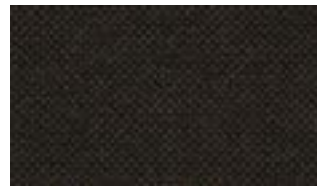
HALLINGDAL 0270



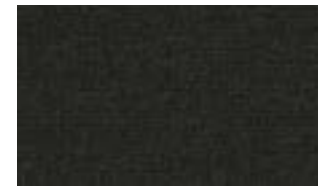
HALLINGDAL 0350



HALLINGDAL 0368



HALLINGDAL 0370



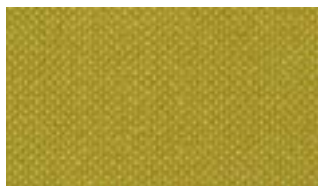
HALLINGDAL 0376



HALLINGDAL 0390



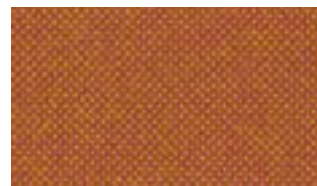
HALLINGDAL 0407



HALLINGDAL 0420



HALLINGDAL 0457



HALLINGDAL 0526



HALLINGDAL 0547



HALLINGDAL 0563

Textiles Hallingdal



HALLINGDAL 0573



HALLINGDAL 0590



HALLINGDAL 0596



HALLINGDAL 0600



HALLINGDAL 0657



HALLINGDAL 0660



HALLINGDAL 0674



HALLINGDAL 0680



HALLINGDAL 0687



HALLINGDAL 0694



HALLINGDAL 0702



HALLINGDAL 0723



HALLINGDAL 0733



HALLINGDAL 0750



HALLINGDAL 0753



HALLINGDAL 0754



HALLINGDAL 0763



HALLINGDAL 0764



HALLINGDAL 0773



HALLINGDAL 0810



HALLINGDAL 0840



HALLINGDAL 0850



HALLINGDAL 0890



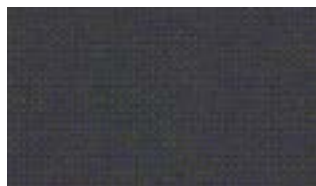
HALLINGDAL 0907



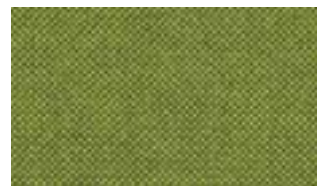
HALLINGDAL 0944



HALLINGDAL 0960



HALLINGDAL 0968



HALLINGDAL 0980



Swell Modular Sofa in Hallingdal 65, 0110

SAHCO ZERO

The influence of Parisian couture clothing can be seen in this elegant and irregular bouclé upholstery textile. The pearl effect yarn is used in both warp and weft giving a luxurious handle and a sophisticated appearance. The sixteen colourways range from tonal through to contrasting 'salt and pepper' combinations.



0011



0010

Category	Kvadrat upholstery
Price Group	6
Composition	65% cotton, 20% polyacrylic, 15% polyester
Width	140 cm (55")
Weight	740 g/lin. m (23.87 oz/ly)
Repeat	0/0 cm (0"/0")
Durability	70,000 Martindale
Pilling	5 (ISO 1-5)
Lightfastness	5-6 (ISO 1-8)
Fire Tests	BS 5852 crib 5 with treatment • EN 1021-1 • US Cal. 117-2013 with Cal. 117 compliant interliner • BS 5852 part 1 with treatment
Seam Slippage	2 mm (warp), 2 mm (weft)

Textiles Sahco Zero



SAHCO ZERO 0001



SAHCO ZERO 0002



SAHCO ZERO 0003



SAHCO ZERO 0004



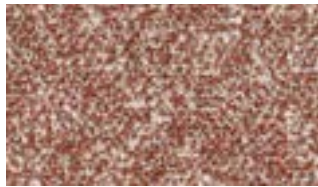
SAHCO ZERO 0005



SAHCO ZERO 0006



SAHCO ZERO 0007



SAHCO ZERO 0008



SAHCO ZERO 0009



SAHCO ZERO 0010



SAHCO ZERO 0011



SAHCO ZERO 0012



SAHCO ZERO 0013



SAHCO ZERO 0014



SAHCO ZERO 0015



SAHCO ZERO 0016

VIDAR

Originally designed by Fanny Aronsen, Vidar has been re-coloured by Raf Simons, with shades ranging from moss green, dark aubergine, ruby red and midnight blue through to brick and earth tones, and easy neutrals.

Tightly woven, without the irregularities of the other bouclé fabrics within this collection, Vidar has an inviting texture, which variously recalls blackberries, orange peel or the comforting close-knit texture of a favourite sweater.



0146

Category	Kvadrat/Raf Simons upholstery
Price Group	6
Pattern	Solid
Composition	94% new wool, 6% nylon
Width	Approx. 140 cm (Approx. 55")
Weight	770 g/lin. m (24.84 oz/ly)
Repeat	Approx. 0/0 cm (Approx. 0"/0")
Durability	100,000 Martindale
Pilling	4 (ISO 1-5)
Lightfastness	7
Fire Tests	BS 5852 crib 5 with treatment • BS 5852 part 1 • IMO FTP Code 2010 Part 8 • NF D 60 013 • NFPA 260 • UNI 9175 1IM • US Cal. Bull. 117-2013 • EN 1021-1/2 • AS/NZS 3837 class 2 • GB 50222 B1 with treatment (Chinese) • SN 198 898 5.3 with treatment • IMO FTP Code 2010 Part 7 with treatment
Fastness to rubbing	3-4 (Dry) 3 (Wet)
Airflow	367 Pa s/m
Absorption	0.55/Class D (Absorption flat)

Textiles Vidar



VIDAR 0106



VIDAR 0123



VIDAR 0133



VIDAR 0143



VIDAR 0146



VIDAR 0152



VIDAR 0182



VIDAR 0222



VIDAR 0323



VIDAR 0333



VIDAR 0353



VIDAR 0363



VIDAR 0386



VIDAR 0443



VIDAR 0456



VIDAR 0472



VIDAR 0526



VIDAR 0542



VIDAR 0554



VIDAR 0556



VIDAR 0582



VIDAR 0622



VIDAR 0633



VIDAR 0653



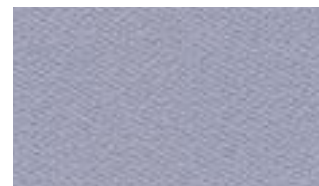
VIDAR 0656



VIDAR 0676



VIDAR 0693



VIDAR 0723



VIDAR 0733



VIDAR 0743

Textiles Vidar



VIDAR

0772



VIDAR

0786



VIDAR

0872



VIDAR

0913



VIDAR

0932



VIDAR

0943



VIDAR

0956



VIDAR

0972



VIDAR

1062



VIDAR

1511



VIDAR

1880



MOSS

The second design by Vincent van Duysen and Anna Vilhelmine Ebbesen is the distinctive upholstery fabric Moss. The mixture of twisted yarn and chenille gives the fabric surface a textured structure with an appearance of movement, and also creates a soft handle which adds a special dimension to the furniture it covers. The twenty-two colourways are either one- or two-tone combinations inspired by Vincent van Duysen's own home and range from cool cement and soft blue to oily green, curry yellow and the shades of natural wood.



Category	Kvadrat upholstery
Price Group	6
Pattern	Solid
Composition	52% cotton 22% viscose 14% polyacrylic 6% linen 3% polyester 3% nylon
Width	Approx. 140 cm (Approx. 55")
Weight	960 g/lin. m (30.96 oz/ ly)
Repeat	Approx. 0/0 cm (Approx. 0"/0")
Durability	50,000 Martindale
Pilling	4-5 (ISO 1-5)
Lightfastness	6 (ISO 1-8)
Fire Tests	AS/NZS 3837 class 2 • US Cal. Bull. 117-2013 with treatment • BS 5852 crib 5 with treatment • IMO FTP Code 2010 Part 8 • NFPA 260 with treatment • BS 5852 part 1 • EN 1021-1/2
Fastness to rubbing	4-5 (Dry) 4-5 (Wet)
Seam slippage	4.5 mm (warp), 4.5 mm (weft)

Textiles Sahco Moss



SAHCO MOSS 0001



SAHCO MOSS 0002



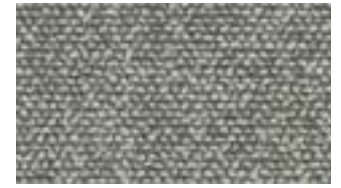
SAHCO MOSS 0003



SAHCO MOSS 0004



SAHCO MOSS 0005



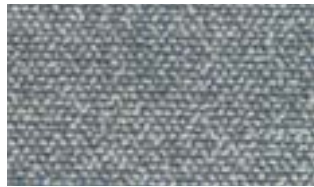
SAHCO MOSS 0006



SAHCO MOSS 0007



SAHCO MOSS 0009



SAHCO MOSS 0010



SAHCO MOSS 0011



SAHCO MOSS 0012



SAHCO MOSS 0013



SAHCO MOSS 0014



SAHCO MOSS 0015



SAHCO MOSS 0016



SAHCO MOSS 0017



SAHCO MOSS 0018



SAHCO MOSS 0019



SAHCO MOSS 0020



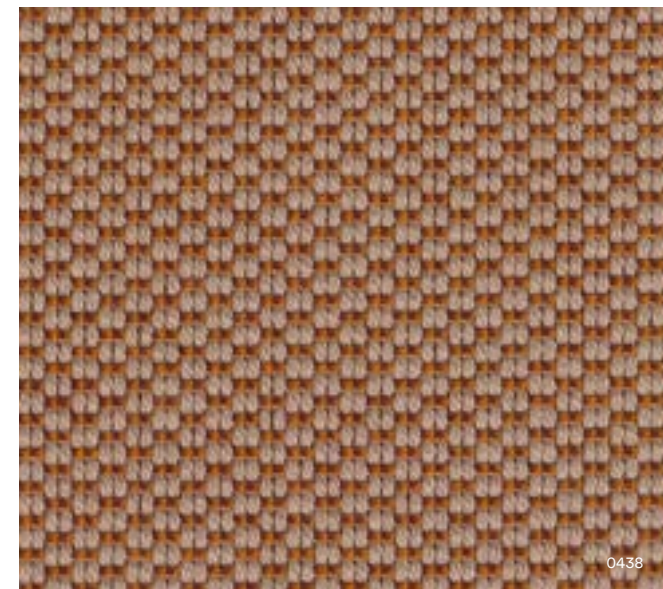
SAHCO MOSS 0021



SAHCO MOSS 0022

SERPENTINE

Serpentine is a voluminous woollen upholstery, designed by colour master Giulio Ridolfo, which reflects the material heritage of Kvadrat with a contemporary twist. Its construction combines classic craftsmanship with modern techniques to create dynamic colour interactions and a distinctive tactility.



0438

Category	Kvadrat upholstery
Price Group	6
Pattern	Solid
Composition	98% new wool, worsted 2% nylon
Width	Approx. 140 cm (Approx. 55")
Weight	850 g/lin. m (27.42 oz/ ly)
Repeat	Approx. 0/0 cm (Approx. 0"/0")
Durability	45,000 Martindale
Pilling	3-4 (ISO 1-5)
Lightfastness	7 (ISO 1-8)
Fire Tests	AS/NZS 3837 class 2 • ASTM E84 Class B Unadhered • SN 198 898 5.3 with treatment • BS 5852 crib 5 with treatment • UNI 9175 11M • ASTM E84 Class B Adhered • ÖNORM B2/Q1 • IMO FTP Code 2010 Part 8 • NFPA 701 with treatment • BS 5852 part 1 • EN 1021-1/2 • NF D 60 013 • US Cal. Bull. 117-2013
Fastness to rubbing	4-5 (Dry) 4-5 (Wet)
Seam slippage	4.5 mm (warp), 3.5 mm (weft)

Textiles Serpentine



SERPENTINE 0118



SERPENTINE 0158



SERPENTINE 0198



SERPENTINE 0238



SERPENTINE 0358



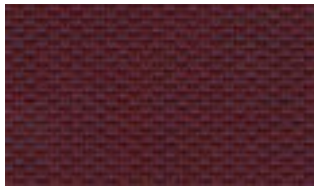
SERPENTINE 0428



SERPENTINE 0438



SERPENTINE 0498



SERPENTINE 0678



SERPENTINE 0798



SERPENTINE 0928



SERPENTINE 0988

SAHCO BARU

An ultra-soft woven woollen bouclé, Baru feels like shorn fleece and has a comforting volume created by the elasticity of the wool fibre and the finishing processes. Yarn dyed with one colour in warp and another in weft, it has the benefits of a woollen textile but a softer feel. The texture of the bouclé coupled with a slight shine from the acrylic blend creates a playful effect as the colour catches the light.



0410

Category	Kvadrat upholstery
Price Group	6
Composition	87% new wool 10% polyester 3% nylon
Width	Approx. 140 cm (Approx. 55")
Weight	770 g/lin. m (24.84 oz/ ly)
Repeat	Approx. 0/0 cm (Approx. 0"/0")
Durability	65,000 Martindale
Pilling	5 (ISO 1-5)
Lightfastness	4-5 (ISO 1-8)
Fire Tests	BS 5852 crib 5 with treatment • IMO FTP Code 2010 Part 8 • BS 5852 part 1 • EN 1021-1/2 • US Cal. Bull. 117-2013
Fastness to rubbing	4 (Dry) 3-4 (Wet)
Seam Slippage	2 mm (warp), 7 mm (weft)

Textiles Sahco Baru



SAHCO BARU 0120



SAHCO BARU 0150



SAHCO BARU 0200



SAHCO BARU 0330



SAHCO BARU 0390



SAHCO BARU 0410



SAHCO BARU 0450



SAHCO BARU 0570



SAHCO BARU 0740



SAHCO BARU 0780



SAHCO BARU 0950



SAHCO BARU 0980

ELLE

A curled bouclé fabric, Elle drapes and curves around furniture like an elegant designer coat. The spun bouclé yarn created by blending wool, viscose and acrylic gives the surface a soft tactility. During the subsequent dyeing the yarns take the colour differently, creating captivating shifts within the same tones.

0280



0200

Category	Sahco upholstery
Price Group	7
Composition	25% cotton, 20% viscose, 20% polyacrylic, 20% wool, 15% polyamide
Width	140 cm (55")
Weight	900 g/lin. m (29.03 oz/ly)
Repeat	0/0 cm (0"/0")
Durability	70,000 Martindale
Pilling	4-5 (ISO 1-5)
Lightfastness	6 (ISO 1-8)
Fire Tests	US Cal. Bull. 117-2013 • BS 5852 crib 5 with treatment • EN 1021-1/2 • BS 5852 part 1 • IMO FTP Code 2010 Part 8
Fastness to rubbing	4-5 (Dry) 4 (Wet)
Seam Slippage	7 mm (warp), 2 mm (weft)

Textiles Elle



ELLE 0150



ELLE 0180



ELLE 0200



ELLE 0220



ELLE 0230



ELLE 0280



ELLE 0290



ELLE 0350



ELLE 0390



ELLE 0480



ELLE 0530



ELLE 0680



ELLE 0750



ELLE 0950



CITY VELVET

A beautiful lush velvet quality. Each color highlights the shimmering surface of the woven velour and adds a touch of soft decadence.

CA7832, 024



CA7832, 073

Manufacturer	JAB
Price Group	4
Composition	Pile: 100% polyester Groundmaterial: 100% polyester
Abrasion resistance	100.000 Martindale
Weight	440 g/m2
Lightfastness	3-5

Textiles City Velvet



CA7832

010



CA7832

011



CA7832

012



CA7832

013



CA7832

014



CA7832

015



CA7832

020



CA7832

021



CA7832

022



CA7832

023



CA7832

024



CA7832

025



CA7832

026



CA7832

027



CA7832

030



CA7832

031



CA7832

032



CA7832

033



CA7832

034



CA7832

035



CA7832

036



CA7832

037



CA7832

038



CA7832

039



CA7832

040



CA7832

041



CA7832

042



CA7832

043



CA7832

050



CA7832

051

Textiles City Velvet



CA7832 052



CA7832 053



CA7832 055



CA7832 056



CA7832 058



CA7832 060



CA7832 061



CA7832 062



CA7832 063



CA7832 064



CA7832 065



CA7832 066



CA7832 069



CA7832 070



CA7832 071



CA7832 072



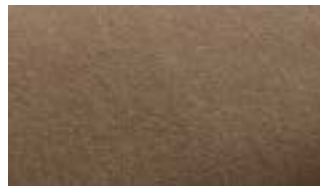
CA7832 073



CA7832 074



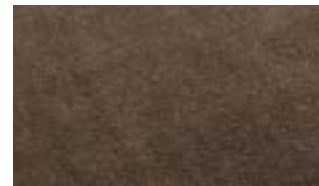
CA7832 075



CA7832 076



CA7832 077



CA7832 078



CA7832 079



CA7832 080



CA7832 081



CA7832 082



CA7832 083



CA7832 084



CA7832 085



CA7832 086

Textiles City Velvet



CA7832

087



CA7832

088



CA7832

089



CA7832

090



CA7832

091



CA7832

092



CA7832

093



CA7832

094



CA7832

095



CA7832

096



CA7832

099



CA7832

126



CA7832

130



CA7832

160



CA7832

161



CA7832

162



CA7832

165



CA7832

170



CA7832

180



CA7832

181



CA7832

184



CA7832

186



CA7832

234



CA7832

263

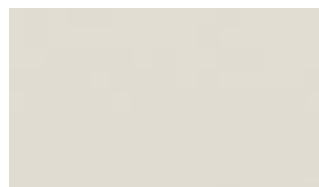
Textiles Natté



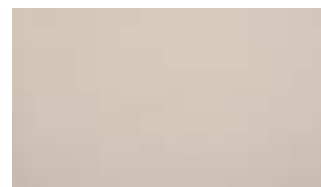
ANTIQUE 5077



NATURE 10014



WHITE 10020



CANVAS 10021



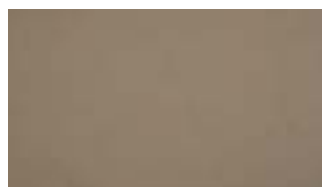
GREY CHINE 10022



FROSTY CHINE 10025



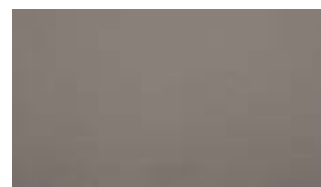
HEATHER BEIGE 10028



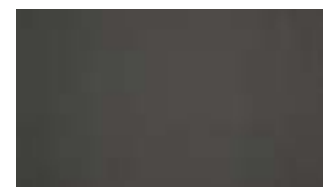
HEATHER GREY 10029



SOOTY 10030



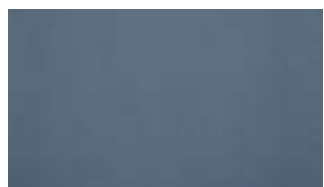
NATURE GREY 10040



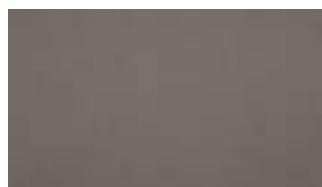
DARK TAUPE 10059



CHARCOAL CHINE 10063



CARBON SKY 10064



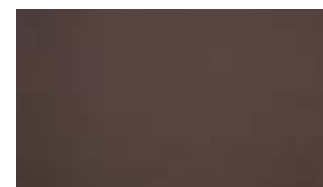
CARBON BEIGE 10065



MASCARA 10078



BLUESTONE 10083



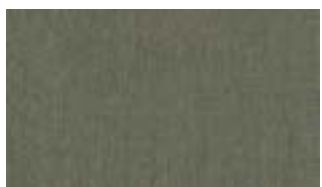
TONKA 10101



CHESTNUT 10102



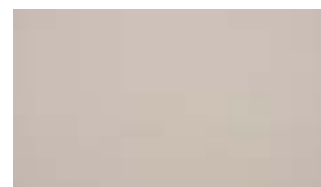
POSEDONIA 10111



BAMBOO 10112



HEATHER CHALK 10150



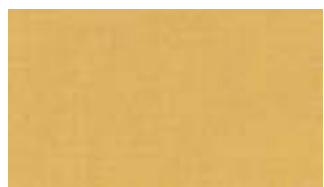
LINEN CHALK 10151



GRAUMEL CHALK 10152



TAUPE CHALK 10155



SUNLIGHT 10250



SPRITZ 10254



NAXOS 10255



POMPEI 10256



COSMOS P094



AGAVE P097



RAR COLLECTION

A timeless, dark grey fabric, elegantly woven with a classic weave texture, Re-Born is primarily crafted from a recycled polyethylene and a hardwearing polyester. The sophisticated Venezia Off-White textile features a combination of slightly different off-white shades woven into each other with a tactility reminiscent of a subtle bouclé-like fabric.

RE-BORN, DARK GREY



RE-BORN

DARK GREY



VENEZIA

OFF-WHITE

RE-BORN

Composition	60% recycled polyethylene, 40% polyester
Durability	100.000 Martindale
Lightfastness	4-5
Pilling	4

VENEZIA

Composition	62% polyester, 17% cotton, 14% viscose, 7% linen
Durability	40.000 Martindale
Lightfastness	5
Pilling	4



Rar Sofa in Venezia Off-White & Rar Cushions 50x50 in Venezia Off-White and Re-Born Dark Grey

CONTACT

NORMANN COPENHAGEN

Niels Hemmingsens Gade 12,
1153 Copenhagen, Denmark

normann@normann-copenhagen.com

+45 35 55 44 59

normann
C O P E N H A G E N